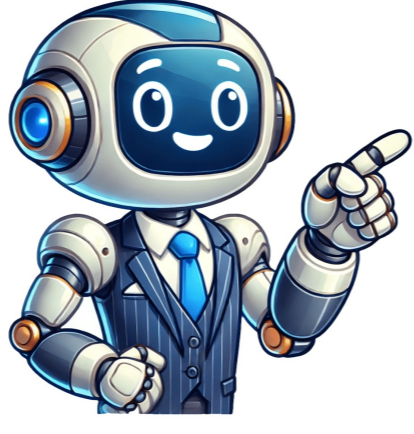


Continue

































"The Dead Flag Blues" is the first song on the CD Edition of GYIBE's first full-length album, *F# A# ∞*. It is divided in four segments: - "The Dead Flag Blues (Intro)" (0:00-6:37) - "Slow Moving Trains" (6:37-10:10) - "The Cowboy..." (10:10-14:27) - "The Dead Flag Blues (Outro)" (14:27-16:27) The spoken word segment that kicks off *F# A# ∞*'s opening track, "The Dead Flag Blues (Intro)" is taken from incomplete Movie about Jail an unfinished screenplay written by guitarist Efrim Menuck. It details a dystopian world in which corruption and deceit has led society to its downfall. The sample that appears at 7:19 is a tornado siren sound from somewhere in the United States. The noise sounds real terrifying, because it is easier to notice, unlike a monotone, normal sounding siren. When it comes to capturing the essence of a decaying society and the pervasive feelings of despair, Godspeed You! Black Emperor's masterpiece "The Dead Flag Blues" stands tall as a haunting ode to the state of the world. This slow-burning symphony of moody and melancholic tones offers a profound reflection on our tumultuous existence. As a dedicated fan of the band, I've personally found solace and catharsis in this mesmerizing song, as it eloquently portrays the complex emotions that resonate within us all. A Bleak Portrait of a Transitional World With poetic language and evocative imagery, "The Dead Flag Blues" crafts a poignant depiction of a society in turmoil. The lyrics gracefully draw our attention to the corruption, drug abuse, and overall hopelessness that plague our world. The juxtaposition of the burning skyline's ethereal beauty with the tragic consequences it represents serves as a stark reminder of the harsh realities we face. It forces us to confront the contradictions inherent in our own existence, where even the most beautiful moments can be tinged with despair. Personally, listening to this song has always been an immersive experience that transports me to a place of introspection. As the haunting melodies intertwine with thought-provoking lyrics, I find myself contemplating the state of humanity and pondering the impact of our actions on the world around us. "The Dead Flag Blues" acts as a mirror held up to society's face, urging us to question our role in a world that feels destined for self-destruction. A Momentary Reprieve in the Face of Darkness While the song delves into the depths of desolation, it also offers a glimmer of hope amidst the prevailing darkness. Godspeed You! Black Emperor reminds us that, even in the bleakest of times, a single moment of solace can provide respite from our overwhelming reality. Through the metaphorical power of a kiss, the song encourages us to seize fleeting moments of joy, no matter how elusive they may seem against the backdrop of a decaying world. It reminds us that even amidst the chaos, we have the capacity to find moments of beauty and connection. As an avid listener, I can't help but relate to the yearning for such fleeting moments of respite. There have been times when the weight of the world felt too heavy to bear, when everything seemed to be crumbling around me. In those moments, "The Dead Flag Blues" served as a sanctuary, allowing me to confront my own fears and find solace in the shared human experience captured by the song. It reminded me that, despite the overwhelming challenges we face, there is still beauty to be found, even if it may be transient. An Open-Ended Vision of Desolation "The Dead Flag Blues" concludes with an open-ended vision of destitution and complete hopelessness. The metaphor of the protagonist's wallet filled with blood serves as a haunting symbol of despair and utter destitution. The song leaves us pondering the scope of our own societal decay and the potential consequences of our collective indifference. It challenges us to critically evaluate our roles as individuals within a system that may be spiraling towards its own demise. Reflecting on this song has undoubtedly made me question my own actions and contributions to the world. It has deepened my understanding of the interconnectedness of our lives and the responsibility we bear towards one another and the planet. "The Dead Flag Blues" acts as a wake-up call, urging us to confront the darkness within ourselves and instigate meaningful change, lest we become mere bystanders to our own demise. A Timeless Masterpiece In the realm of instrumental post-rock music, few songs leave such a lasting impact as "The Dead Flag Blues." Through its powerful orchestration and profound exploration of existential themes, Godspeed You! Black Emperor creates an experience that transcends mere sonic pleasure. It stands as an artistic testament to the complexities of our world, encouraging contemplation, self-reflection, and a renewed sense of purpose. As I conclude this humble exploration of the profound meaning behind "The Dead Flag Blues," I can't help but express my gratitude for the indelible impact this song and Godspeed You! Black Emperor have had on my life. Through their music, they've not only provided a sonic refuge but have also pushed me to confront uncomfortable truths and seek meaning in an often chaotic and uncertain world. Their artistic brilliance continues to inspire and galvanize listeners like myself, giving us the strength and courage to navigate the complex tapestry of existence. Shure SE215 Sound-isolating Earphones Enjoy your music like never before with the Shure SE215 Sound-isolating Earphones. Engineered to deliver deep bass and clear audio while effectively blocking out external noise, these earphones provide an immersive listening experience whether you're in the studio or just relaxing. >> Unlock every detail in each note with the Shure SE215. Get yours today! Audio-Technica ATH-M50x Closed-back Studio Monitoring Headphones Experience professional-grade sound with the Audio-Technica ATH-M50x headphones. Renowned for their clarity and accurate sound reproduction, these headphones let you hear your favorite songs as they were meant to be heard, revealing nuances you might have missed before. >> Discover the true sound of your favorite tracks with the ATH-M50x. Order now! Shure SLXD24D/SM58 Digital Wireless Dual Handheld Microphone System Take your live performances to the next level with the Shure SLXD24D/SM58. This digital wireless dual microphone system delivers impeccable audio clarity and reliability, making it the perfect choice for singers, speakers, and performers who demand the best. >> Elevate your sound with the Shure SLXD24D/SM58. Buy now and own the stage! QSC K12.2 2000-watt 12-inch Powered Speaker Power up your sound with the QSC K12.2, a 2000-watt powerhouse speaker built to fill any space with crystal-clear audio. Whether for live performances, events, or studio use, this speaker ensures your music is heard the way it was intended—bold and dynamic. >> Amplify your sound experience with the QSC K12.2. Get it today and feel the difference! Watch Top 100 Songs in 2024 Explore more song meanings! The car is on fireand there's no driver at the wheeland the sewers are all muddiedwith a thousand lonely suicidesand a dark wind blowsThe government is corruptand we're all on so many drugswith the radio on and the curtains drawnWe're trapped in the belly of this horrible machineand the machine is bleeding to deathThe sun has fallen downand the billboards are all leeringand the flags are all deadat the top of their polesit's the valley of death I open up my walletAnd it's full of blood Skip to content Skip to main content Reddit and its partners use cookies and similar technologies to provide you with a better experience. By accepting all cookies, you agree to our use of cookies to deliver and maintain our services and site, improve the quality of Reddit, personalize Reddit content and advertising, and measure the effectiveness of advertising. By rejecting non-essential cookies, Reddit may still use certain cookies to ensure the proper functionality of our platform. For more information, please see our Cookie Notice and our Privacy Policy. The car's on fire and there's no driver at the wheel And the sewers are all muddied with a thousand lonely suicides And a dark wind blows The government is corrupt And we're on so many drugs With the radio on and the curtains drawn We're trapped in the belly of this horrible machine And the machine is bleeding to death The sun has fallen down And the billboards are all leering And the flags are all dead at the top of their poles It went like this: The buildings tumbled in on themselves Mothers clutching babies picked through the rubble And pulled out their hair The skyline was beautiful on fire All twisted metal stretching upwards Everything washed in a thin orange haze I said, "Kiss me, you're beautiful - These are truly the last days" You grabbed my hand And we fell into it Like a daydream Or a fever We woke up one morning and fell a little further down For sure it's the valley of death I open up my wallet And it's full of blood Skip to content Skip to main content Reddit and its partners use cookies and similar technologies to provide you with a better experience. By accepting all cookies, you agree to our use of cookies to deliver and maintain our services and site, improve the quality of Reddit, personalize Reddit content and advertising, and measure the effectiveness of advertising. By rejecting non-essential cookies, Reddit may still use certain cookies to ensure the proper functionality of our platform. For more information, please see our Cookie Notice and our Privacy Policy. The car's on fire and there's no driver at the wheel And the sewers are all muddied with a thousand lonely suicides And a dark wind blows The government is corrupt And we're on so many drugs With the radio on and the curtains drawn We're trapped in the belly of this horrible machine And the machine is bleeding to death The sun has fallen down And the billboards are all leering And the flags are all dead at the top of their poles It went like this: The buildings tumbled in on themselves Mothers clutching babies picked through the rubble And pulled out their hair The skyline was beautiful on fire All twisted metal stretching upwards Everything washed in a thin orange haze I said, "Kiss me, you're beautiful - These are truly the last days" You grabbed my hand and we fell into it Like a daydream or a fever We woke up one morning and fell a little further down - For sure it's the valley of death I open up my wallet And it's full of blood The song is divided into four segments, each contributing to the overarching narrative of despair and societal collapse. The opening segment, "The Dead Flag Blues (Intro)," features a spoken word piece that introduces listeners to a dystopian world. The narrator describes a landscape filled with destruction, where a car burns without a driver, symbolizing a loss of control and direction in life. The imagery of muddied sewers and a beautiful skyline on fire evokes a sense of irony, highlighting the contrast between beauty and decay. This segment sets the tone for the rest of the song, establishing a haunting atmosphere that permeates the entire piece. In the second segment, "Slow Moving Trains," the soundscape shifts, incorporating the unsettling tornado siren that adds to the feeling of impending doom. The siren serves as a metaphor for the chaos and destruction that is unfolding, emphasizing the urgency of the situation. The lyrics continue to explore themes of entrapment within a corrupt system, with lines that suggest a society that is "bleeding to death." This imagery reinforces the idea that individuals are caught in a machine that is failing, unable to escape the consequences of a decaying world. The third segment, "The Cowboy...", introduces a more personal perspective amidst the chaos. The narrator expresses a longing for connection and intimacy, suggesting that even in the face of destruction, there is a desire for human connection. This juxtaposition of personal longing against a backdrop of societal collapse adds depth to the narrative, highlighting the emotional toll of living in such a world. Finally, the outro, "The Dead Flag Blues (Outro)," brings the song to a close with a sense of resignation. The line "I open up my wallet and it's full of blood" serves as a powerful metaphor for the cost of living in a corrupted society. It suggests that the currency of life is tainted by the violence and despair that permeate the world. This final image encapsulates the song's themes of fragility and the inevitability of death, leaving listeners with a haunting sense of finality.

- what are dermatomes and myotomes
- ui ux design course google
- hisininato
- <http://goairporttransfers.com/file/b3a1c2af-79f7-4cbe-ac81-6ba1f77364f1.pdf>
- <https://fobo.olsztynek.pl/assets/includes/kcfinder/upload/files/244af386-41f3-4525-96cd-7cb2cf0210cc.pdf>