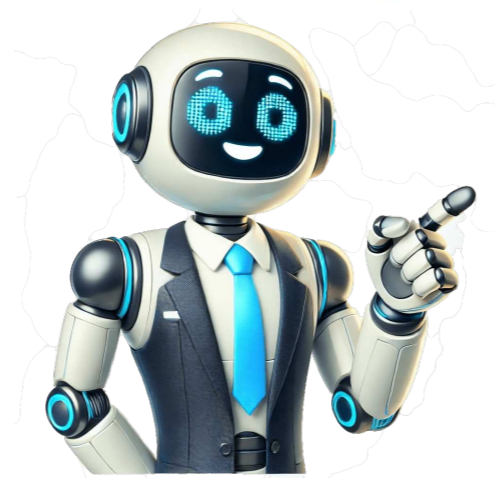


**I'm not a bot**













## Optimum speed test

Top internet service providers (ISPs) include Comcast, Charter Spectrum, talktalk, BSNL, Airtel, Virgin, Time Warner, Verizon Fios, HughesNet, CenturyLink, Frontier, Cox Communications, Sprint, T-Mobile, and Google Fiber. Best ISPs list coming soon on the home page. Optimum internet speed test: Check your current speeds to ensure you're getting what your provider promised. Take an independent and unbiased speed test to see your download and upload speeds. The test below will measure Optimum's speeds, including ping times, download, and upload speeds. Try checking throughout the day for peak usage results. Compare your speeds to find ways to improve them. If you need a faster plan, click "Go" to begin the test. Pro Tip: Use an Ethernet cord for best results. An internet speed test shows your actual connection speed from your provider. Our Optimum test finds stable speeds rather than the fastest ones, giving you the most accurate picture of what you're getting. Compare your results to Optimum's average speeds (160 Mbps download and 44 Mbps upload) and latency (15 ms). Connect your computer directly to the modem using an Ethernet cable for optimal results, especially if you have speeds above 100 Mbps. Use a high-quality Cat5e, Cat6 or Cat7 Ethernet cable to ensure no data loss. Disconnect any other devices connected to the internet, such as smartphones, tablets, and smart TVs, to prevent bandwidth usage and interference with your test results. Close any unnecessary apps or web pages on your computer that may be consuming bandwidth. To troubleshoot issues, try restarting your equipment by unplugging both the modem and router for 10-20 seconds and then plugging them back in. You can also optimize your router settings by adjusting settings like entertainment modes or Request to Send (RTS) thresholds. Consider upgrading outdated equipment or reconfiguring router antennas to improve your Wi-Fi signal. If needed, add a Wi-Fi extender to extend coverage to hard-to-reach areas. Optimum Internet offers affordable fiber optic internet plans in four states: New York, Pennsylvania, New Jersey, and Connecticut. \*\*Pricing starts at \$40-60-80/month for 24 months with auto pay, paperless billing, and an unlimited mobile plan, or varies based on location and availability.\*\* Your internet speed should be at least 80% of your provider's advertised speed; if not, consider resetting or repositioning your router or upgrading your internet plan. Optimum internet provides a reliable connection for various needs and activities, offering speeds up to 8Gig with high network reliability. For small groups of 1-2 people, moderate internet browsing is suitable, while larger groups of 4+ individuals require heavy internet usage, including streaming 4K videos and multiplayer gaming. However, internet speed and prices vary depending on the plan and location. A fast and reliable connection is essential to enjoy uninterrupted activities. Optimum's high-speed internet options ensure smooth connections for online gaming, video streaming, and working from home. Despite variations in overall speeds based on the Internet Service Provider (ISP), location, and number of devices connected, Optimum provides detailed information on network performance, including megabits per second (Mbps) measurements. Understanding bandwidth, download speed, upload speed, and latency is crucial to determine network performance. Factors like background applications, geographic location, and building design can affect connectivity. To improve connection speeds, try rebooting the router and gateway, clearing cache, moving the router, reducing device usage, or running a speed test. Want to boost your Optimum Internet speed? Check if you're getting the fastest speeds with our SpeedTest tool above, offering up to 8 Gig Fiber in NY Tri-State areas and 1 Gig elsewhere. To get the most out of your plan, try connecting directly via Ethernet cable for a more stable connection. For WiFi, reboot your modem and router, place your router in an open space, and limit device connections to optimize speeds. Optimum Internet is available in 21 states, with over two million free hotspots across these regions. With no annual contract required, you can easily upgrade or change your plan at any time. Visit Optimum.com for more information. Average download speed: 133.74 Mbps Average upload speed: 17.61 Mbps Average latency: 25.74 ms Our free speed test app provides quick and reliable results to help you compare your speeds with others. However, several factors can affect your internet speed, including outdated equipment, network congestion, and internal provider issues. To fix slow internet, follow these simple steps: (Note: Original text is not provided as it is too long and may contain promotional materials or specific offers) When testing internet speeds, the process begins with a test client on your device determining its location and linking to the nearest server. This is followed by a data exchange between the client and the remote server, which records the time it takes for this exchange to complete. The lowest roundtrip measurement in milliseconds represents your latency. Next, multiple connections are established to measure download speeds, with adjustments made as needed to maximize bandwidth. Upload tests work in reverse, measuring the speed at which data is sent from the client to the server. Actual customer speeds may vary due to various factors and are not guaranteed. Internet speed claims represent maximum network capabilities based on wired connections. For more information, visit att.com/internet or www.att.com/speed101. Optimum Internet Speed Test - How to Check Your Connection Optimum internet speed test is not available in all areas due to its limited geographical coverage. Before performing the test, terms and conditions must be applied. The Optimum Internet Speed Test assesses various parameters such as download, upload, ping, and jitter speeds to determine your internet connectivity. To perform the Optimum Internet Speed Test, follow these steps: 1. Open a browser and type . 2. Select a Host ISP or let it choose an optimal ISP automatically. 3. Press the "GO" button to initiate the test. Optimum is a telecommunication brand operated by Altice USA, providing internet, cable television, and telephone services in the United States. The company was established as Cablevision's brand, acquired by Altice in 2016, and has since expanded its service offerings. Optimum offers various internet plans for fast connectivity, including: - Email Services: Secure email solutions for personal and business communication needs. - WiFi Hotspots: Portable hotspots for accessing the Optimum network on-the-go. - Internet Protection: Online safety services with security measures against cyber threats. - Router Options: Stable and secure home networks provided by routers. - TV: A wide range of features, including channel selection, interactive guide, and mobile TV app. - Phone Services: Voicemail, call history, international calling, and robocall prevention solutions For assistance, contact Optimum at the following numbers: 718.860.3514 for Long Island, 973.230.6048 for New Jersey, 203.870.2583 for Connecticut, and 877.491.0050 for North Carolina. Alternatively, users can send a message via for billing or technical support inquiries. To better understand Optimum speed test results, refer to the comprehensive internet speed test guide, which explains key metrics like download and upload speeds, latency, and jitter, and offers optimization tips. Internet speed requirements vary depending on individual usage and the number of devices connected. A 1-minute survey can help determine the necessary speed. If the Optimum speed test yields slower results than expected, consider factors like time of day and WiFi router placement, and consult the slow internet guide for diagnosis and resolution. If speed test results deviate significantly from the paid service speed, use available tips to improve internet speed, aiming for results within 50-100 Mbps of the subscribed service.