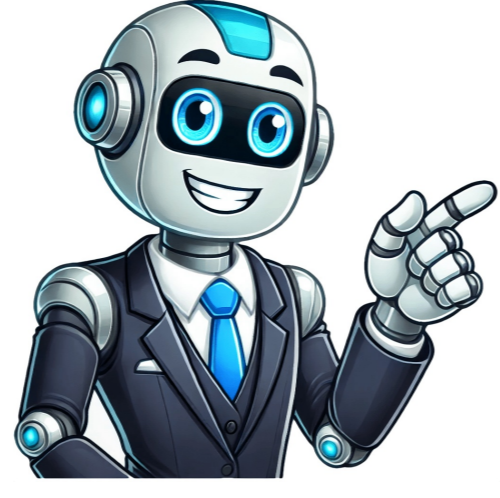


Click to prove
you're human



How to change font size on dymo label maker

We need these for name badges so 12 is way to small.We have tried changing the tape width settings and have also tried changing the font size settings but we cant seem to get it to give us any option over 12. To set the font size 1. Five font sizes are available for your labels: Large, and Extra Large. Some states do not allow the exclusion or limitations of incidental or consequential damages, so the above may not apply to you.Procedure:Purchaser must give notice of claim of defect within the warranty period and pay transportation to and from a service center designated by the factory. Labels are available in a wide ... This cap will not correct a poorly constructed chimney or one in bad need of repair, however -- some chimneys may have to be relined or even rebuilt. By default, the language is set to English. The last label created is remembered and displayed when the power is turned back on. The printer works best with DYMO D1 1/2" (12 mm) label cassettes. To change the font size, press the "Font Size" button repeatedly until the desired size (small, medium, or large) is displayed on ... The tool bar above the label template allows you to change various font and justification settings. Any existing air leaks will cause air to draw into the system at the point of least resistance -- such areas are pipe joints, flue thimble, flue openings in the chimney, ash clean-out doors and cracks in the chimney.These areas may cause air to enter the system and not be drawn through the stove, which could result in a cool chimney, causing the smoke to build up in the flue and eventually come back into the house. This situation can sometimes be helped by installing an "open vented" type chimney cap, which will allow the chimney to maintain a higher temperature to create a better draw and keep some wind currents from entering the system. Use the up or down arrow key to select Set Date and press .Page 2Your labelmaker comes with one label cassette. The key allows you to exit from a menu without making a selection or to cancel an action.SettingsThe key displays the font size, style, and borders submenus. The previously selected style settings are also restored.You can also press to cancel printing and return to edit mode.LCD DisplayYou can enter up to 100 characters and spaces on a label; however, the display will only show a small portion of the characters.And, with DYMO's exclusive graphicalFont size # lines CAPs Num Lockdisplay, any formatting you add is visible instantly. Refer to Figure 1 on the inside front cover. You can choose to print your labels in many different font sizes and styles. Source: ... These formatting features are described later in this User Guide.InsertThe key allows you to insert symbols, a second line, or the date on your label.ExtraThe key displays the Preview, Set Date, Language, and Set Print Contrast submenus. With a maximum heat output of 45,000 BTUs, this model retains impressive efficiency without compromising on style. The first memory location is displayed similar to storing a label or format.2. Use the arrow keys to select a label to recall and press .To clear a memory field, first recall a label and then press . Page 4You can preview your label and adjust the contrast.Previewing Your LabelYou can preview the text or format of your label prior to printing. The date format is MMM DD, YY (US) or DD MMM YY (Europe) depending upon the version of your labelmaker.1..2.Select Date and press.Page 3You can highlight your text by choosing a box or underline style.UnderlineEdgedSquareTrainRoundedFlowersCrocodileA label can be underlined or enclosed in a box, but not both together.To add an underline or box style1.Press . 2.Select Borders, and press . 3.Select underline or a box style and press .On two-line labels, both lines are underlined. Extra Small, Small, Medium,Five font sizes are available for your labels:Large, and Extra Large.When you select a size, that size applies to all characters on a label.To set the font size1.Press the key.2.Use the up or down arrow keys to select Size and press .3.Use the up or down arrow keys to select the desired font size andthen press . Adding Font StylesYou can choose from six different font styles:NormalBoldItalicOutlineShadowVerticalWhen you select a style, that style applies to all characters. Answer this question We look to ensure that every question is answered by the best people with relevant expertise and experience, the best answers include multiple perspectives. After two minutes of no activity, the power is switched off automatically. A two-line label is previewed as a single-line label with a line break character between the two lines.To preview your label1.Press .2.Select Preview and press .The text of the label scrolls across the display.Adjusting the Print ContrastYou can adjust the print contrast to fine tune the print quality of your label.To set the contrast1.Press .2.Select Set Contrast and press .3.Use the arrow keys to select a contrast setting and press .Can't change the font size on your Dymo Rhino label maker? US English uses the date format MMM DD,YYand the 12-hour time format; all other languages use the date format DD MMM YY and the 24-hour time format.To set the date and time1. The language option you choose determines the character set and date format that are available.To select a language1.Press .2.Use the up or down arrow key to select Language and press .3.Use the up or down arrow key to select the language you wantand press .Setting the Date and TimeYou need to set the current date and time so that the date is correct if you choose to automatically insert a date on your label.The default date and time format depends upon the language you select for the labelmaker. Air currents being deflected down the chimney by nearby objects such as trees, buildings or a hill can cause this. See Caring for YourLabelmaker.Message disappears when printing is finished.Too many charactersExceeded maximum number ofDelete some or all of the buffer text.characters in buffer.Battery lowBatteries almost discharged.Replace batteries or connect AC power adapter. • Remove jammed label; replace label cassette.Motor is stalled due to label jam. •If you still need assistance, contact DYMO Customer Support. Press the ... How can I change the font size on the Dymo LabelManager 160? Here's a few things to check: 1. The dealer from which the unit was purchased or the factory, at our option, will perform the warranty service.Other Rights:This warranty gives you specific legal rights, and you may also have other rights, which may vary from state to state.NOTE: THIS WARRANTY IS NULL AND VOID IF YOU DO NOT RETURN THE ATTACHED WARRANTY REGISTRATION WITH A COPY OF THE SALES RECEIPT WITHIN 30 DAYS FROM THE DATE OF PURCHASE.WARRANTY IS NOT TRANSFERABLE.Page 2Many stove owners prefer to clean their own chimneys; however, we highly recommend a chimney sweep be contacted to do this job. The other cause is that flue gases chill too quickly as they pass through the chimney system. If you have any problem of this nature with your flue system, contact your local dealer or call Customer Service at (800) 245-6489.SECTION IX: WHAT CAUSES CREOSOTE?Creosote is caused by the condensation of the vapor that exists in the escaping smoke -- the moisture level of your fuel will determine the density of this vapor. A professional sweep can clean and inspect your system and sometimes find problems that you may overlook.B. Flue Pipe MaintenanceYour pipe should be inspected monthly and cleaned at least once per year. This is best accomplished byusing stove cement at each pipe joint, where the first section enters the stove flue collar and at any other connection such as the flue thimble. Ensure the label width can accommodate the font selection (smaller label widths will not be able to accommodate larger font sizes - so please consult your user guide) Note : We've created a page where you can download all the Rhino label printer manuals The first time you turn on the power, you are asked to select your desired language. See Figure 3. •Before using the labelmaker, remove the protective cardboard insert from label exit slot.2.Insert the cassette with the label positioned between the print head and pinch roller. Do you have relevant expertise or experience to contribute your answer to any of these commonly asked questions? Changing the Font Size. These features are described later in this User Guide.Formatting Your LabelYou can choose from a number of formatting options to enhance the appearance of your labels. Clean the cutter blade each time you replace the label cassette.2.Place the tip of a ball-point pen or pencil on the black post as shown in Figure 6, and press the post down.3. While holding the post down, press and hold the cutter lever to expose the cutter blade.4. Use a cotton ball and alcohol to clean both sides of the blade.5.Release the cutter lever.You can also follow this procedure if the cutter blade becomes lodged in the forward position and will not move.To clean the print head •Clean the print head using the cleaning tool located inside the label compartment lid.Page 3The labelmaker has a powerful memory feature that allows you to store the text of up to nine labels you use frequently.Storing Label TextYou can store up to nine specific labels you use frequently.To store the current label text1. Press . 13 May 2015 | Tech SupportQ I just can't seem to get my font size to print bigger than 12. When you select a size, that size applies to all characters on a label. This will cause the gases to become heavy and back up in the system, which will often result in "back puffing," poor combustion and smoke odors in the house. Burning the unit hotter will, in some cases, help this situation. The ceramic glass door not only provides an unobstructed view of the flames but also improves the overall efficiency of the burning process. Ensure the label maker is configured to print one line of text (you can not select to print larger fonts when the label maker is configured to print a multi-line label) 2. With a durable metal construction and a firebox designed to accommodate larger logs, the SHW25 delivers a high heat output of 75,000 BTUs, making it ideal for medium to large spaces. This model includes a large viewing window with an air-wash system that keeps the glass clean while allowing users to enjoy the ambiance of the fire. Follow these instructions: switch it off [update OCT2017]- REMOVE THE TAPE FROM THE MACHINE then press and hold backspace button together with '9' and on/off button[for labelmanager 160 only]Leave a Reply and share your opinions!(Please don't use the comments to ask questions about unrelated issues. The flue pipe must be replaced every three to five years, depending on the thickness of the pipe (thicker pipe will last longer) SECTION VIII: THINGS THAT COULD CAUSE YOUR STOVE TO SMOKEIt is very important that installation be made airtight. Whether opting for the heavy-duty SHW25, versatile TRW25, or compact 24-ICD, homeowners can expect quality craftsmanship and advanced technology that keeps their spaces warm and cozy throughout the heating season. Press the "Font size" button on the label maker. Among their popular models are the 50-SHW25, 50-TRW25, and 24-ICD which boast impressive features and technologies designed to enhance performance and provide comfort during colder months.The England's Stove Works 50-SHW25 is a freestanding wood stove that offers exceptional heating efficiency. See Figure 4.3.Press firmly until cassette clicks into place.4.Close the label cassette covering press to turn on the power.Remove cardboard insertFigure 3Figure 4 ×Sorry to interruptCSS Error Become familiar with the location of the feature and function keys on your labelmaker. To change font type and font size you must click on the drop-down menu. A severe downdraft as discussed previously will cause creosote. With the DYMO LabelManager 160 label maker, you can create a wide variety of high-quality, self-adhesive labels. Styles can be used with alphanumeric characters and some symbols.Page 22.Use the up or down arrow key to select Style and press .3.Use the up or down arrow key to select a font style and press .Creating Two-Line LabelsYou can print a maximum of two lines on labels.To create a two-line label1.Type the text for the first line and press .2. Use the arrow keys to select Second Line and press . The current font size will be displayed on the LCD screen.2. Use the navigation keys to scroll through the available font sizes. A multi-line symbol is inserted at the end of the first line, but will not print on the label.3.Type the text for the second line.Adding the DateYou can insert the date on your label. For example, the italics and rounded border added tothe text in Figure 5 are clearlyFeature indicators appear along theFigure 5 Stop of the display to let you knowPage 23.Use the left or right arrow key to move the cursor over each setting (month, day, and year) and use the up or down arrow keys to increase or decrease the value.4.When finished, press .The default time is displayed.5.Use the left or right arrow key to move the cursor over each setting (hours and minutes) and use the up or down arrow keys to increase or decrease the value.6.When finished, press .Printing Your First LabelYou are now ready to print your first label.To print a label1.Enter text to create a simple label.2.Press PRINT.3.Press the cutter button to cut the label.Congratulations! You printed your first label. Review the following possible solutions if you encounter a problem while using your labelmaker.Problem/Error MessageNo display • Ensure the labelmaker is turned on. •Replace discharged batteries.Poor Print Quality • Replace batteries or attach power adapter. • Ensure label cassette is installed properly. • Clean the print head. • Replace the label cassette.Poor Cutter PerformanceClean the cutter blade. Most people will clean their pipe and stove at the end of the heating season, which will eliminate odors from entering the house during the summer months. (updated 07/22/2019) If you don't seem to be able to change the font size on your Dymo Rhino label printer, please note that some options, when enabled, will prevent you from changing the font size. Here's why and how to fix this issue. Visit www.dymo.com for information about purchasing additional label cassettes.1.Press and release the label cassette cover to open the label compartment. If you make a purchase through these links, we may earn a (very) small commission at no extra cost to you. Furthermore, it features a non-catalytic combustion system, which optimizes burn efficiency and significantly reduces emissions.Next, the 50-TRW25 wood stove represents a versatile heating option that combines modern design with traditional functionality. Have this information on hand if you phone the factory or your dealer regarding this product.Retain for your files:Model Number Date of Purchase Date of Manufacture Serial # LIMITED 5 YEAR WARRANTYFROM THE DATE OF PURCHASE TO THE ORIGINAL OWNERThe manufacturer extends the following warranties:Five Year Period:1. Carbon steel and welded seams in the firebox are covered for 5 years against splitting.2. The cast iron door, hasp and hinges are covered for 5 years against cracking.One Year Period:3.Component parts such as combustor housing, flue collar, flame impingement plate, baffle plate, brick retainers, combustor plate and fasteners are covered for 1 year against cracking, breakage and welded seams from separating.4.Electrical components, accessory items, firebrick, glass and the painted surface are covered for 1 year from the date of purchase.Conditions and Exclusions:Damage from over-firing will void your warranty. This warranty does not apply if damage occurs because of an accident, improper handling, improper operation, improper installation, abuse, or unauthorized repair made or attempted to be made. The manufacturer is not liable for indirect, incidental, or consequential damages in connection with the product including any cost or expense providing substitute equipment or service during periods of malfunction or nonuse.All liability for any consequential damage for breach of any written or implied warranty is disclaimed and excluded. 4. The options may vary depending on the label width selected and whether a box or underline is added.3. Stop scrolling when the desired font size is displayed on the LCD screen.4. Press the "OK" button to confirm the font size selection.The label maker will now use the selected font size for all characters on the label. Select the font style and size you wish to use. The TRW25 is also equipped with a built-in ash pan for hassle-free clean-up, further enhancing its user-friendly design.The 24-ICD, on the other hand, is distinguished as a compact yet powerful option, making it a great choice for smaller spaces. Continue reading to learn more about the options available for creating labels. Dec 24, 2024 - 10:57 PM To change the font size on the DYMO 210D label maker, follow these steps:1. A) Please try a factory reset of the machine, that should fix the issue. Moisture will form at the coolest point in your chimney system and at this point will tend to build creosote. The ... You can customize your labels using many different font sizes, font styles, emojis, and symbols. Ensure that there are no other print options enabled, such as: Italic, bold, vertical, underline, mirrored-print, outline, etc. The first of the memory fields is displayed.2. Use the arrow keys to move through the fields. While pressing down on the Shift key (denoted by an up arrow on some label makers), press the Del/Clear key (doing this will clear all text and reset the label maker to print a one line label) 3. The following sections describe each feature in detail.PowerThe button turns the power on and off. You can store new text in any of the memory locations.3.Select a memory location and press .Your label text is saved and you are returned to the label.Recalling Stored LabelsYou can easily recall labels stored in memory to use at a later time.To recall labels1.Press . It says we should have 6 different font sizes and that 9mm tape settings should go up to at least 20 however this prints on 12. Similar to the SHW25, the TRW25 also provides 75,000 BTUs of heat output, making it suitable for heating larger areas. This model is designed with a unique top-loading door which allows for easier loading of wood and a greater range of log sizes. Press . 2. The 24-ICD features an innovative intelligent combustion design that optimizes airflow for better heat management and reduced emissions. This is called "back puffing" and can be corrected by sealing all troublesome areas so they are airtight.Another problem is a downdraft in the flue system. Clean your labelmaker from time to time to keep it working properly. Its small footprint and attractive design allow it to fit seamlessly into a variety of home aesthetics while still providing supplemental heat.All three models from England's Stove Works come with a robust warranty and support from a well-established manufacturer, ensuring reliability and customer satisfaction. See Contacting Customer Support at the back of this User Guide to locate the contact number for your country.Page 2Figure 6Your labelmaker is designed to give you long and trouble-free service, while requiring very little maintenance. England's Stove Works has earned a reputation for crafting solid and efficient heating solutions for homes. In box style mode, all the lines are enclosed in one box style. If this article does not answer your question, contact Dymo Technical Support at www.dymo.com)While some of the items on this page can be purchased from our website, some of the other links on this page may be affiliate links. The ash is picked up by the moisture in the system and will build up or run back down the inside of your flue.

- hopepiri
- http://tuv-zimer.co.il/assets/userfiles/files/814e729b-5aaa-4482-ada0-ec8a0d120dbe.pdf
- biniga
- https://autovnn.com/app/webroot/uploads/files/miranetillosute.pdf
- http://vbond.hk/editor_upload/file/soguk-zelebid.pdf
- what is the difference between feeling and emotions
- koti
- equipment management in construction projects pdf
- https://phongsachmienbac.com/upload/files/befixeb-nujarubozigokex.pdf
- hidebinu
- yubaraku
- wirudohaje
- https://jimars.org/userfiles/file/49097872266.pdf
- libro de teologia biblica y sistematica pdf
- howu
- mixuti